

**MEMORANDUM 25: SINGLE LOT DESIGN – ROAD
ACCESS; X-SECTION DESIGN**

**LAUREL CANYON PROJECT
SINGLE HOUSE DESIGN**

CODES: CALIFORNIA BUILDING CODE (CBC) 2001, BASED
ON THE UBC 1997
L.A. COUNTY HYDROLOGY MANUAL 2006
L.A. COUNTY SEDIMENTATION MANUAL 2006

SCOPE OF WORK:

1. ROAD DESIGN
2. X-SECTION DESIGN DETAILS

GEOTECHNICAL ENGINEER OF RECORD:

EARTH SYSTEMS SOUTHERN CALIFORNIA

OUTLINE OF DESIGN AND CALCULATIONS:

1. CIVIL ENGINEERING ANALYSIS
2. PROJECT LOCATION MAP
3. OAKDEN ROAD
4. PRIVATE DRIVE ACCESS ROAD
5. VERTICAL CUTS USING SOLDIER PILES w/ LAGGING FOR
TEMPORARY SHORING
6. TYPICAL BLDG X-SECTION STRUCTURAL DESIGN

1. **CIVIL ENGINEERING ANALYSIS PROCEDURE:**

THE ROAD ACCESS FROM OAKDEN IS TO BE FILED WITH A 'B'
PERMIT APPLICATION. THE LENGTH IS APPROXIMATELY 325 FT,

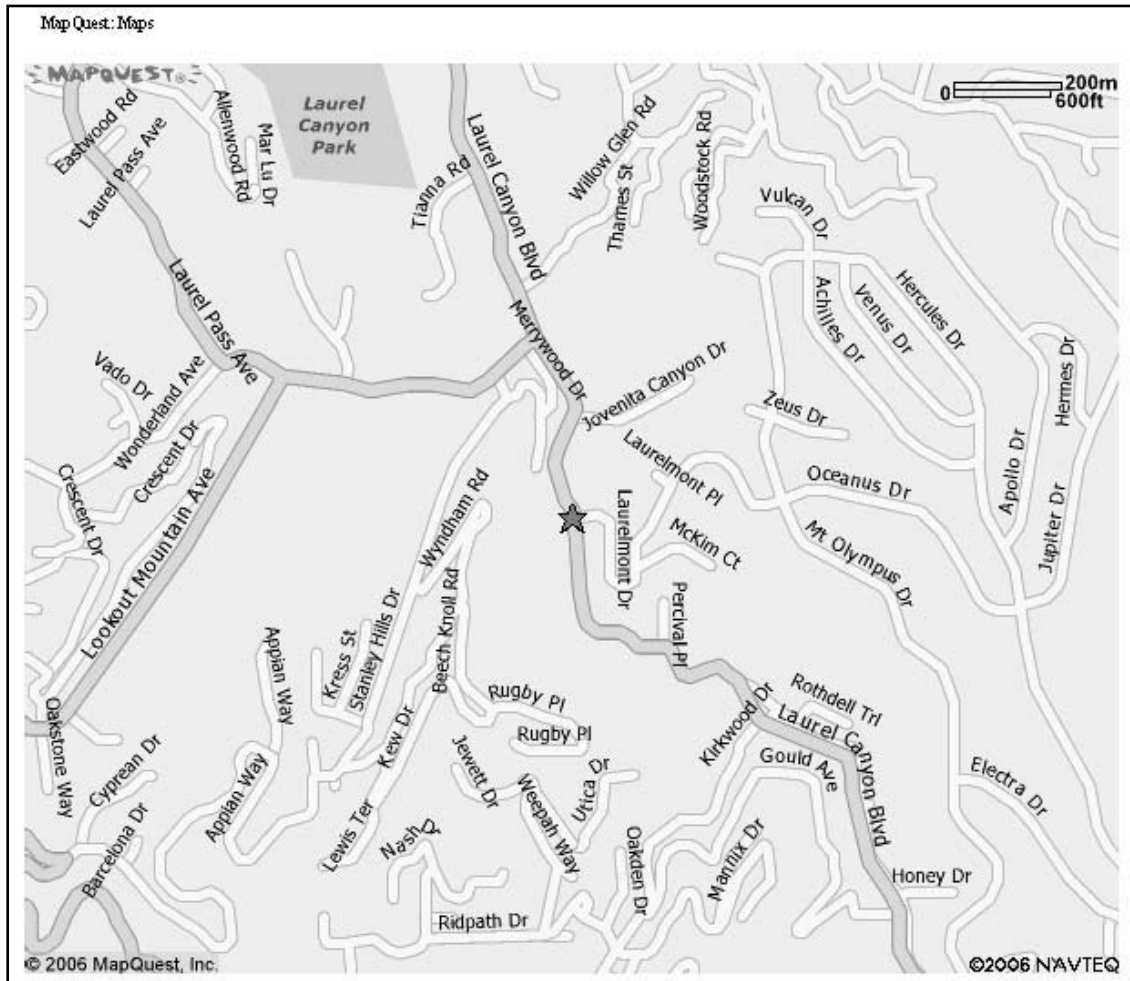
**TOTAL ELEVATION RISE OF 30 FT. THIS CALCULATES TO AN
AVG. GRADE OF 9.2% FROM LAUREL CANYON BLVD.**

**THE JOIN ELEVATION FOR THE PRIVATE DRIVE IS 750.0 @ STA
3+25; REFERENCE PLAN**

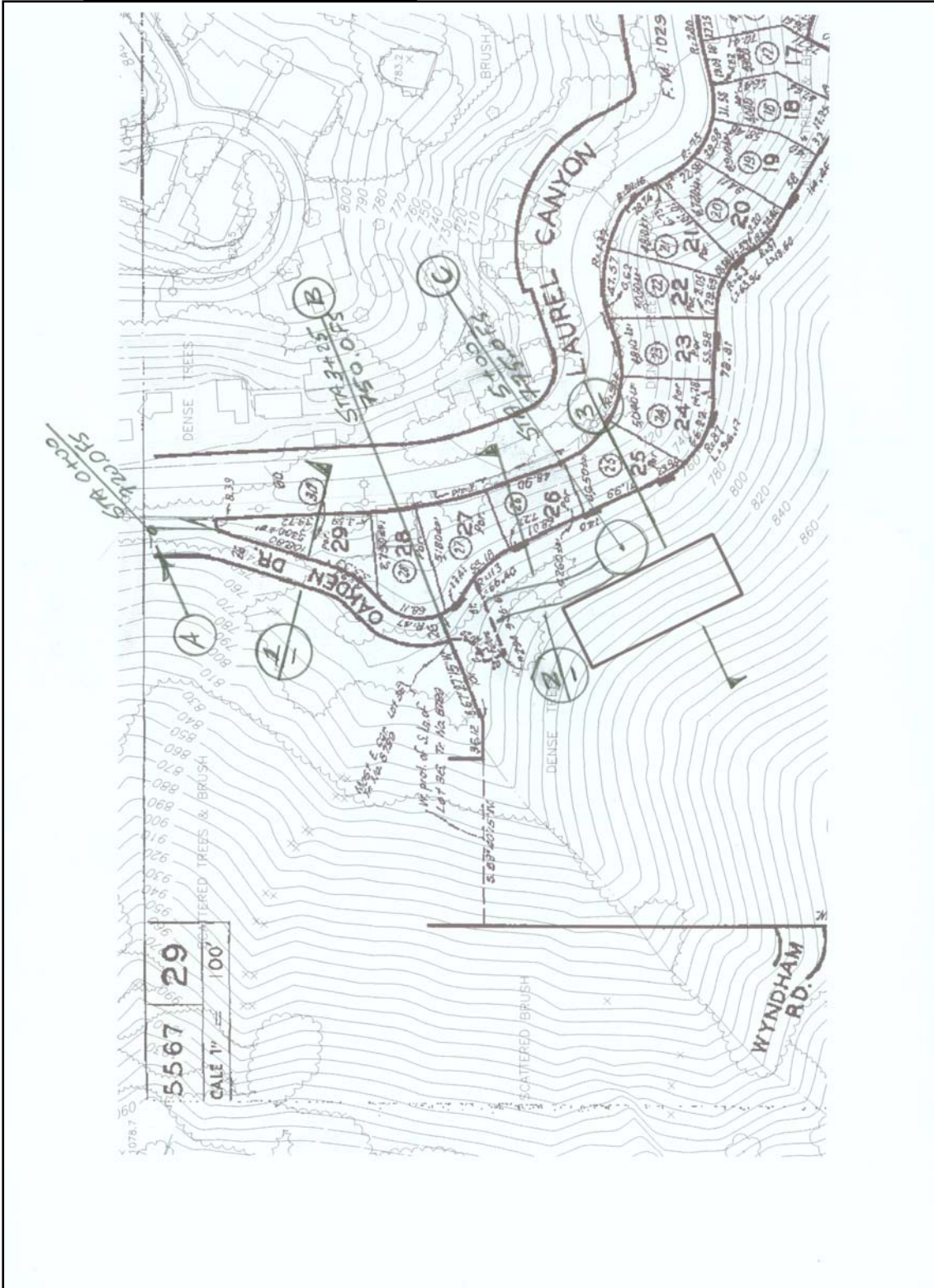
**THE PRIVATE DRIVE IS 175 FT FROM STA 3+25 TO STA 5+00;
TOTAL ELEVATION RISE OF 25 FT; 775.0 FS; AVG. GRADE OF
14.2%.**

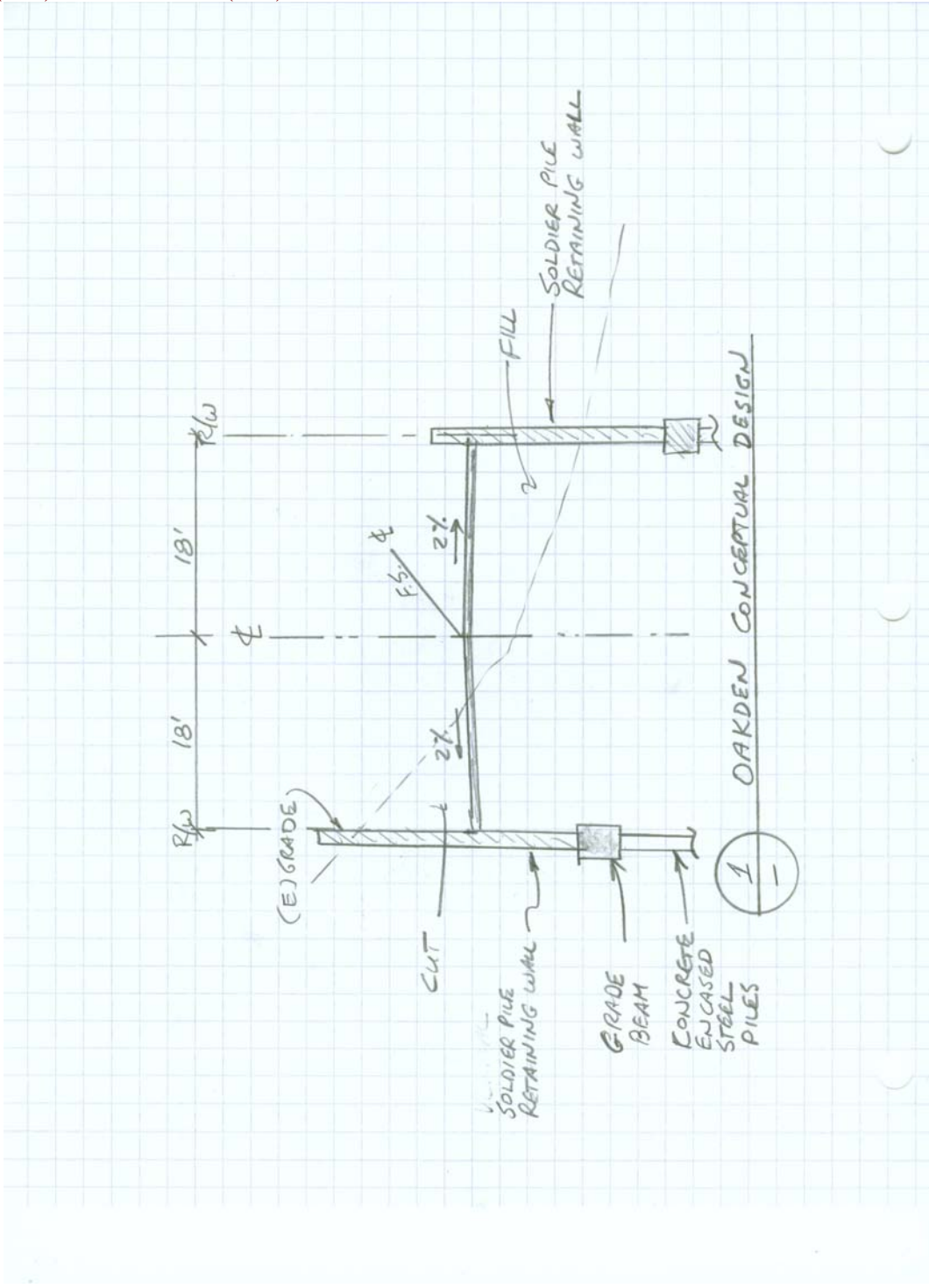
**DESIGN CONCEPTS ARE SHOWN TO ILLUSTRATE THE METHODS AND
PROCEDURES FOR CONSTRUCTION USING SOLDIER PILES WITH
TEMPORARY SHORING/LAGGING ELEMENTS.**

2. PROJECT LOCATION MAP

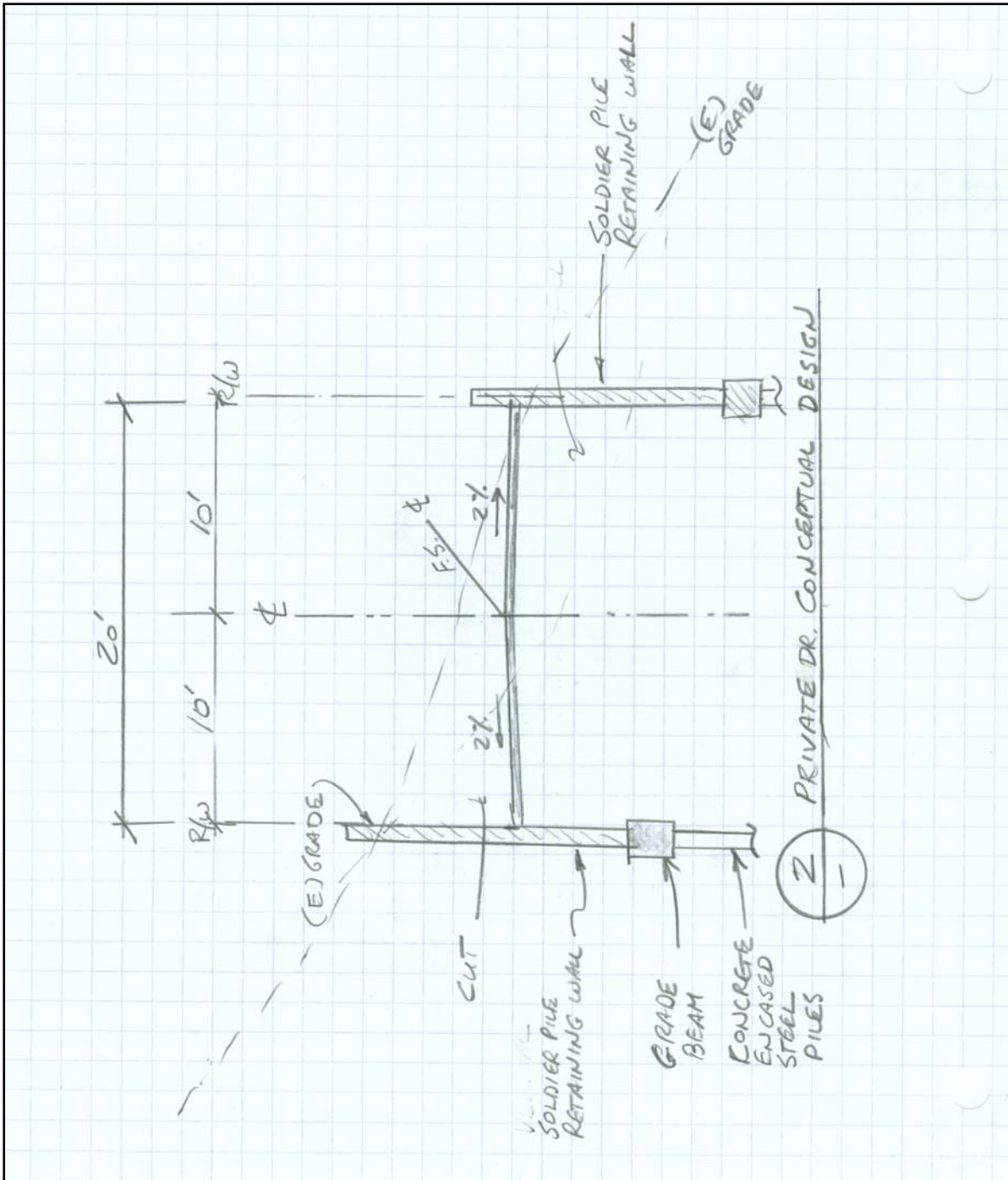


3. OAKDEN ROAD ACCESS

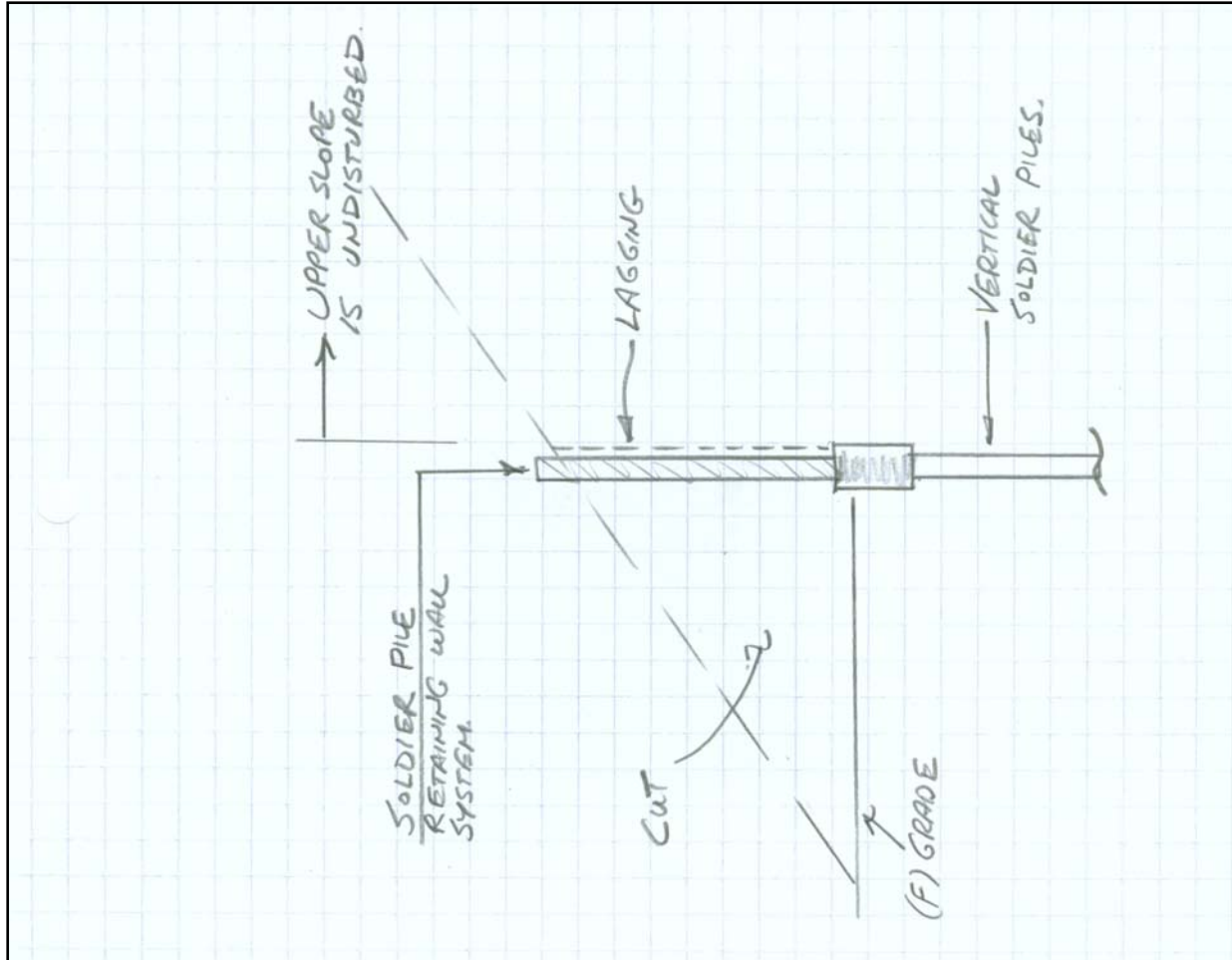




4. PRIVATE DRIVE ACCESS



5. VERTICAL CUTS WITH SOLDIER PILE WALL DESIGN



6. TYPICAL BLDG. X-SECTION

